

2014 Annual Report

In our 4th year of this One Life Church journey, we had some extraordinary results as we opened our 3rd site on the east side of Evansville. Here is a quick look at growth of attendance and giving for an average week:

Calendar year through 2014

Jan-December	2011	2012	2013	2014
Adults:	890	1,167	1,385	1,419
Kids:	<u>243</u>	<u>329</u>	<u>502</u>	<u>534</u>
Total	1,133	1,526	1,887	1,953
Offerings	\$19,654	\$22,203	\$28,736	\$33,293
GPA	\$22	\$19	\$21	\$23

To break it down by site over the last 6 months of 2014 looks like this:

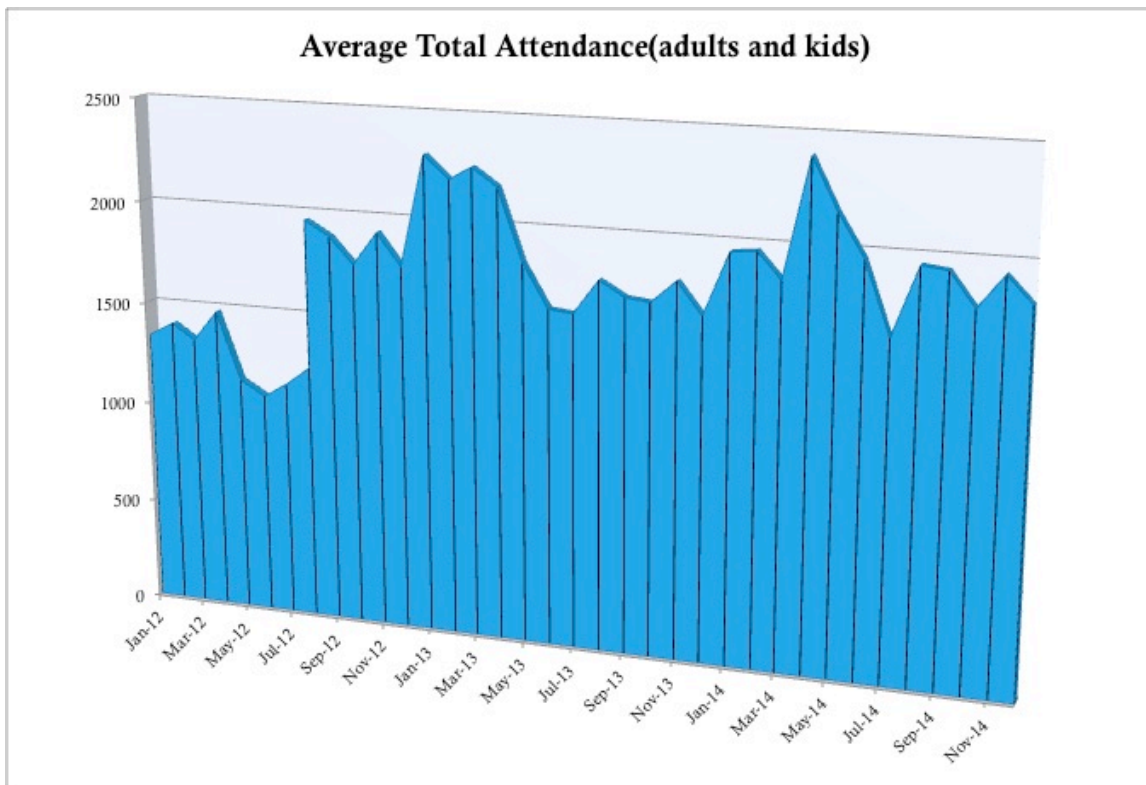
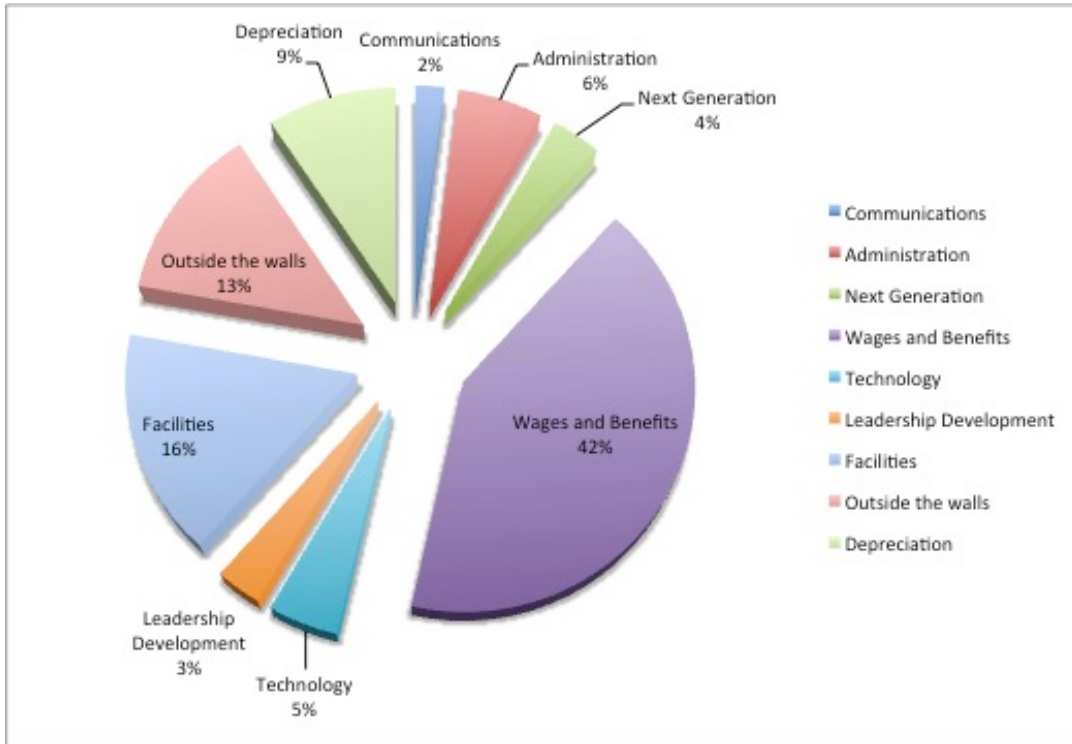
2014 Snapshot-6 Months

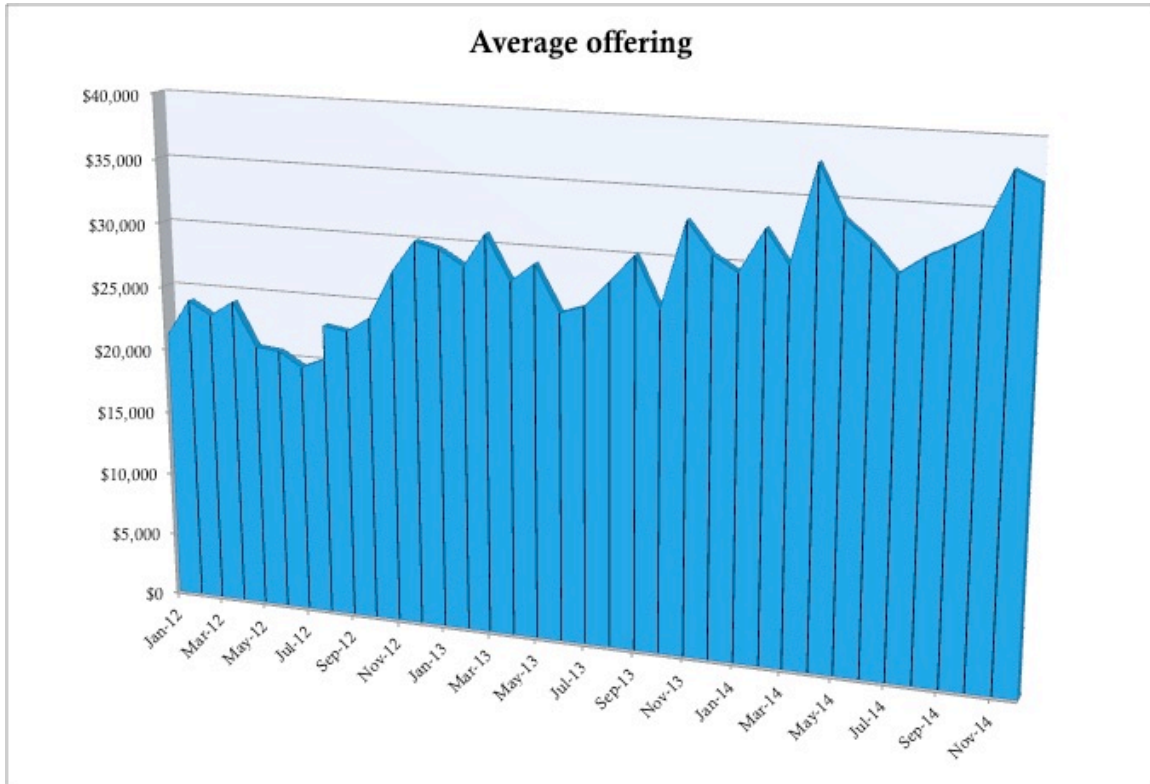
July-December	Henderson	West	East
Adults:	548	377	433
Kids:	<u>200</u>	<u>173</u>	<u>149</u>
Total	748	550	582
Offerings	\$15,041	\$8,021	\$10,478
GPA	\$27	\$21	\$24
% of total	45%	24%	31%

GPA is giving per attender

The following pages include graphs of expenses and trends in attendance and giving, a top 10 list of 2014 highlights and a financial compilation from our accounting firm. Thanks for your continued support on this One Life journey.

Expenses for 2014





The value of a site: In looking at the impact short term of opening a site, it is interesting to take a snapshot between launches...

Total Attendance Average per week

With 1 site-from 10/10/10 to 8/19/12: **1171**

With 2 sites-from 8/19/12 to 4/20/14: **1499 +28%**

With 3 site-from 4/20/14 to 12/31/14: **1959 +31%**

Bottom line is we have seen a long term average of 30% growth overall from every site we have launched.

TOP 10 ONE LIFE CHURCH MOMENTS 2014

#10 – Uncharted International’s award winning movie **Ang**

It’s hard to capture all that happens through Uncharted International — churches, planted, orphans homes built, street kids school underway, 220 sent on trips—but we will go with **Ang**. **Ang** was a film on



human trafficking to raise awareness and tell the story of how Uncharted is responding in Myanmar to help not only end the slavery there, but restore the lives impacted by this evil. It is a prime example of overcoming darkness with light, which is only possible by the presence of the Church.

Global Impact: Because Jesus said to make disciples of all NATIONS.

#9 — Project Life



Projects are days where we envision that the entire Sunday morning gathering is nothing but Explorers and we take one piece of the Christian Message and deliver it in a way that connects completely to our current cultural climate. Project Life took a close look at the Resurrection and what it means for our lives. Plus the creative team figured out a crucial logistical problem of multi-site delivery that will enable us to expand the medium moving forward.

Cultural Communication: Because Jesus told his story in human terms.

#8—Global Leadership Summit

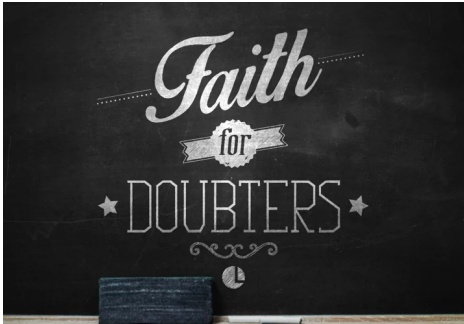
It was another momentous year for the GLS in the One Life Network. Myanmar added its third location, it launched in Dubai, there was a preview on the Westside for next year's second Evansville location



at West and we had record numbers attend in Henderson. There was also a significant step forward in developing our leaders community wide with the KYNDLE leadership series where business, non-profit, educators and high school students received quality leadership training.

Leadership Development: Because Jesus poured his life into the few to impact the many.

#7 — Faith for Doubters Series



We took 9-weeks to address the biggest reasons for doubt expressed by our culture, covering everything from “why God allows suffering” to “what about homosexuality” to “how can Jesus be the only way”?

This was an important step for us being a place where Explorers can voice questions and be answered with intellectual integrity.

Cultural Influence: Because Jesus is Lord over every aspect of human life.

#6 — Project Life, the Series

One of the things we have noticed a needed correction in was the discipleship on our teams. Project Life, the Series was our response to what God was teaching us as a church family. For 10-weeks we took an in-depth look at the basics of Christianity through Alpha and are using it as a launching pad to make every one of our teams a discipling experience.

Leadership Development: Because Jesus poured his life into the few to impact the many.

#5 — City Serve Day

On April 5, One Life Church joined with 26 other churches in the Evansville- Henderson area to take a tangible step towards building a great city. Over 1,200 volunteers showed up to serve with the Cities, neighbors and community partners as a great witness to what can be done when we work together.



Community Development: Because Jesus revolutionized the world by placing high value on the least.

#4 — Full Life Conference



Nicknamed the “Holy Spirit Explosion Day”—that is precisely what happened! We gathered together to learn how the fullness of our lives is fulfilled through God’s Spirit alive in us. It was a powerful day better experienced than explained with singing, prayer and discussion. Most importantly it was a

refueling for the mission God has called us to, but doing so relying on His Spirit.

Prayer and Worship: Because no movement happens without God moving.

#3 – Mission Teams

We have been leading towards more missional small groups for a couple years now, but took another step towards our mission of helping people far from God experience Jesus by deploying our Life Groups to be Mission Teams, on mission in our communities on an ongoing basis, activating our people to be the vehicle God uses to build a great city.



Cultural Influence: Because Jesus is Lord over every aspect of human life.

#2 – Launch of East/ Easter

The Vision of One Life Church is to be a church planting organization devoted to reaching unchurched secular minded people. On April 20, One Life Network launched its 3rd campus, the culmination of countless volunteer hours and sacrificial giving. We are now on mission in three communities, helping people far from God experience Jesus. Easter was also our record attendance day with 3,617 attending.



Church Planting: Because it's the single most effective way to reach people far from God.

#1 — Baptisms



86 baptisms in 2014 brings our 4 year One Life total to 419. We did baptisms in Garvin Park together as a Network in July, then followed by our first baptisms in three communities in November which was a powerful and visible expression of our mission— people declaring they have experienced Jesus and put their faith in him.

Prayer and Worship: Because no movement happens without God moving.

ONE LIFE NETWORK, INC.
A Not-for-Profit Corporation

Financial Report
(Compiled)

December 31, 2014

CONTENTS

	<u>Page</u>
Independent Accountants' Compilation Report	2
Financial Statements:	
Statement of Assets, Liabilities, and Net Assets--Modified Cash Basis	3
Statement of Support, Revenue, and Expenses--Modified Cash Basis	4
Statement of Cash Flows--Modified Cash Basis	5
Notes to Financial Statements	6-7



VOWELLS & SCHAAF, LLP

A Limited Liability Partnership

ACCOUNTANTS' COMPILATION REPORT

Board of Directors
One Life Network, Inc.

We have compiled the accompanying statement of assets, liabilities, and net assets -- modified cash basis of One Life Network, Inc. as of December 31, 2014, and the related statement of support, revenue, and expenses--modified cash basis as of December 31, 2014 and statement of cash flows--modified cash basis for the year then ended, and the related notes to the financial statements. We have not audited or reviewed the accompanying financial statements and, accordingly, do not express an opinion or provide any assurance about whether the financial statements are in accordance with the modified cash basis of accounting.

Management is responsible for the preparation and fair presentation of these financial statements in accordance with the modified cash basis of accounting described in Note 1; this includes determining that the modified cash basis of accounting is an acceptable basis for the preparation of the financial statements in these circumstances. Management is also responsible for the design, implementation, and maintenance of internal control relevant to the preparation and fair presentation of the financial statements.

Our responsibility is to conduct the compilation in accordance with Statements on Standards for Accounting and Review Services issued by the American Institute of Certified Public Accountants. The objective of a compilation is to assist management in presenting information in the form of financial statements without undertaking to obtain or provide any assurance that there are no material modifications that should be made to the financial statements.

Vowells & SchAAF LLP
Evansville, IN

March 14, 2015

CERTIFIED PUBLIC ACCOUNTANTS

BOONVILLE
501 West Main Street
P.O. Box 465
47601
Phone: (812) 897-0120
Fax: (812) 897-1079

EVANSVILLE
601 S.E. ML King Jr. Blvd.
P.O. Box 119
47701-0119
Phone: (812) 421-4165
Fax: (812) 421-4179

PRINCETON
220 N. Hart Street
P.O. Box 384
47670
Phone: (812) 385-4872
Fax: (812) 385-5199

ONE LIFE NETWORK, INC
A Not-for-Profit Corporation

STATEMENT OF ASSETS, LIABILITIES, AND NET ASSETS--
MODIFIED CASH BASIS
Year Ended December 31, 2014

ASSETS

Current Assets	
Cash and cash equivalents	\$ 80,221
Total Current Assets	<u>80,221</u>
Property and Equipment	1,975,106
Less accumulated depreciation	<u>(514,737)</u>
Total Property and Equipment, Net	1,460,369
Total Assets	<u>\$ 1,540,590</u>

LIABILITIES AND NET ASSETS

Current Liabilities	
Current Maturities of Long-term Debt	\$ 59,343
Payroll Tax Liabilities	<u>3,155</u>
Total Current Liabilities	<u>62,498</u>
Long-term debt net of current maturities	<u>193,666</u>
Total Liabilities	256,164
Net Assets	<u>1,284,426</u>
Total Liabilities and Net Assets	<u>\$ 1,540,590</u>

See notes to financial statements and accountants' compilation report.

ONE LIFE NETWORK, INC
A Not-for-Profit Corporation

STATEMENT OF SUPPORT, REVENUE, AND EXPENSES--
MODIFIED CASH BASIS
Year Ended December 31, 2014

Support and revenue		
Tithes and Offerings	\$	1,803,973
Uncharted-Global Missions		40,341
Engage-Local Missions		7,915
Next Generation-Kids and Students		8,073
Church Planting		252,151
Leadership Development Income		315
Miscellaneous Revenue		<u>25,970</u>
Total Support and Revenue	\$	2,138,738
Expenses		
Administration		108,983
Church Planting		28,462
Communication		36,425
Depreciation		168,456
Engage Local Missions		19,314
Facilities		294,038
Frontline		26,413
Interest		180
Leadership Development		53,633
Life Groups		3,459
Next Generation-Kids and Students		59,156
Uncharted Global Missions		182,306
Technology		85,738
Wages and Benefits		<u>754,307</u>
Total Expenses	\$	1,820,870
Changes in Net Assets	\$	<u>317,868</u>
Net Assets at Beginning of Year	\$	<u>966,558</u>
Net Assets at End of Year	\$	<u><u>1,284,426</u></u>

See notes to financial statements and accountants' compilation report.

ONE LIFE NETWORK, INC
A Not-for-Profit Corporation

STATEMENT OF CASH FLOWS--MODIFIED CASH BASIS
Year Ended December 31, 2014

Cash Flows form Operating Activities		
Change in net assets	\$	317,868
Adjustments to reconcile change in net assets to net cash provided by operating activities		
Depreciation		168,456
Changes in assets and liabilities:		
Decrease (increase)		
Prepaid expenses		12,685
Increase (decrease)		
Payroll tax liabilities		<u>(6,993)</u>
Net cash provided by operating activities	\$	<u>492,016</u>
Cash Flows from Investing Activities		
Purchase of property and equipment and improvements		<u>(721,319)</u>
Cash Flows from Financing Activities		
Construction Loan Payable		250,000
Payments on long-term borrowings		<u>(21,139)</u>
Net increase in cash and cash equivalents	\$	(442)
Cash as of January 1, 2014	\$	<u>80,663</u>
Cash as of December 31, 2014	\$	<u><u>80,221</u></u>

See notes to financial statements and accountants' compilation report.

ONE LIFE NETWORK, INC
A Not-for-Profit Corporation

Notes to Financial Statements
December 31, 2014

NOTE 1 -- NATURE OF ACTIVITIES AND SIGNIFICANT ACCOUNTING POLICIES

Nature of Activities

One Life Network, Inc. (the Organization) was established to plant churches with a vision to help people far from God experience Jesus. The Organization is exempt from income taxes under Section 501(c)(3) of the Internal Revenue Code and is classified as other than a private foundation.

Basis of Accounting

The preparation of financial statements have been prepared on the modified cash basis of accounting. That basis differs from accounting principles generally accepted in the United States of America primarily because the Organization has not recognized balances, and the related effects on the changes in net assets, of fees and contributions receivable and of accounts payable to vendors. The Organization's cash and cash equivalents include cash on hand, demand checking and savings accounts.

Property and Equipment and Depreciation

Property and equipment are recorded at cost. Expenditures for repairs and maintenance are charged to expense as incurred, whereas renewals and betterments that extend the lives of property are capitalized. Depreciation is computed on the straight-line and accelerated methods over estimated useful lives.

Use of Estimates

Preparation of financial statements in conformity with the modified cash basis of accounting requires estimating some of the amounts reported. Actual results could differ from the estimates.

Donated Services

The Organization receives significant amount of donated services from members of the Board of Directors and members of the church. No amounts have been recognized in the accompanying statement of support, revenue, and expenses--modified cash basis because the criteria for recognition of such volunteer effort has not been satisfied.

Date of Management's Review

Management has evaluated subsequent events through March 14, 2015, the date that the financial statements were available to be issued.

NOTE 2 -- CASH

Cash consists of bank deposits in federally insured accounts and a brokerage account. At December 31, 2014 the Company's cash accounts are under the federally insured limits.